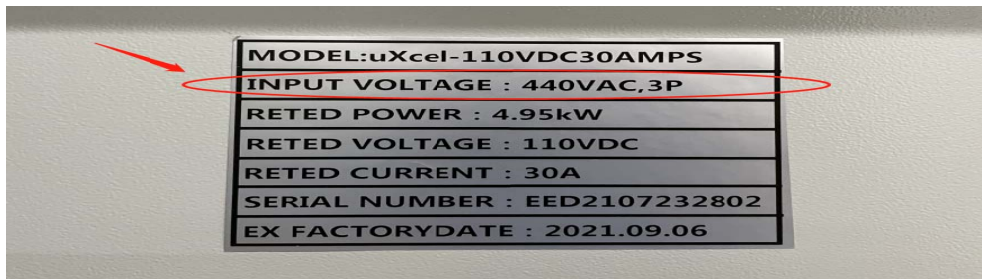


## Charger operating instructions

1. In order to prevent the inconsistency of the mains voltage and the charger voltage from causing damage to the charger, you need to carefully check the charger's label before operation, and pay attention to the charger's input voltage, phase number, frequency and other parameters.

(As shown below)

(under normal circumstances, the charger is labeled on the back of the front door)



2. After confirming that the input voltage is correct, connect the input power cord to the input terminal of the charger.

(As shown below)

(when the input voltage is single-phase, connect a live wire L and a neutral wire N).



(As shown below)

(when the input voltage is three-phase, connect phases A, B, and C respectively).



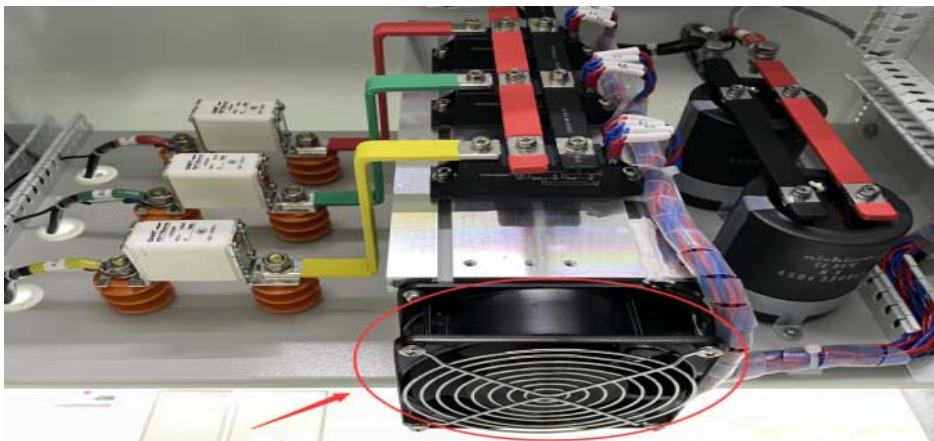
- The resistance wire load (bulb) needs to be connected to the charger output when it is first turned on. (As shown below)



- Turn on the input circuit breaker, fan circuit breaker, and output circuit breaker in sequence. (As shown below)



5. Observe whether the fan works normally.  
(As shown below)  
(respectively the fan at the rear door of the cabinet or the fan at the top, and the fan under the radiator)



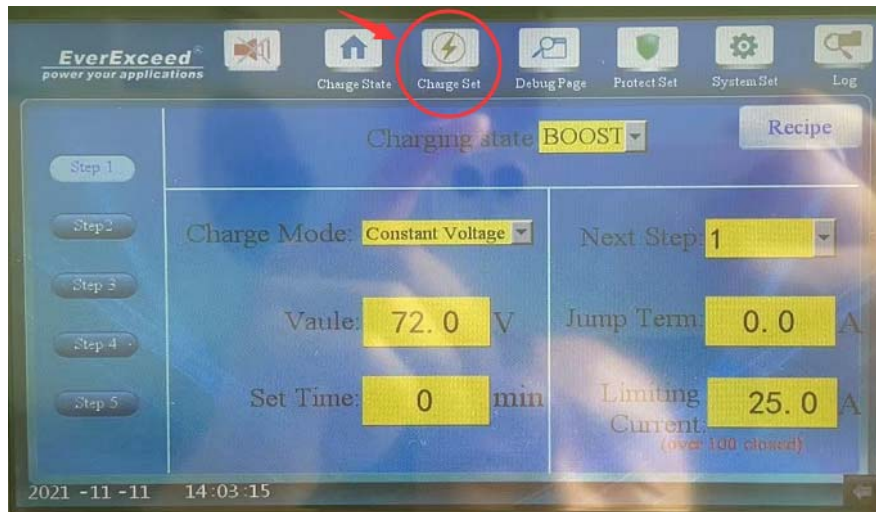
6. Turn the knob switch ON/OFF on the door to the ON position, and the touch screen will light up. (As shown below)





- Enter the charger setting interface, and set the charging according to actual needs and operating instructions.

(As shown below) Enter the "ChargeSet" page, and set the parameters from step one to step five according to actual needs. (View instructions)

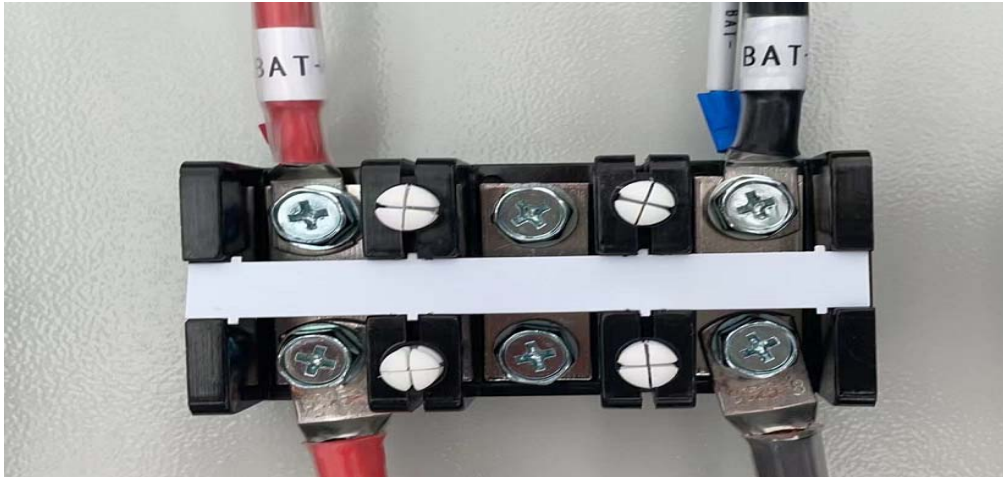


- Click the start button on the touch screen to start the charger, measure the output voltage with a multimeter, and observe whether the charging voltage rises slowly. If it rises slowly, there is no problem. If it rises suddenly, it is recommended to change the phase sequence of the input three-phase power before starting.

(If it is connected to A, B, C at the beginning, then replace it with A, C, B). Observe whether the actual voltage matches the set voltage. (As shown below)



9. Turn off the charger and input switch, connect the battery, and pay attention not to reverse the polarity of the battery, otherwise the charger insurance will be burned.



10. After confirming that the battery is connected correctly, turn on the input circuit breaker, fan circuit breaker, output circuit breaker, and rotary switch to the ON position in sequence. (Refer to Article 4 and Article 6 above)
11. Program the battery charging process and press [Start Pause] to send the run command. (Refer to Article 7 above)
12. Observe the running display data for 20 minutes and confirm that the polarity of the battery is correct. The voltage should rise slowly during constant current charging. If any abnormality is found, stop immediately, and check the device and external output wiring and battery polarity connection. It must be noted that the current, voltage, and time should meet the process requirements during operation.